

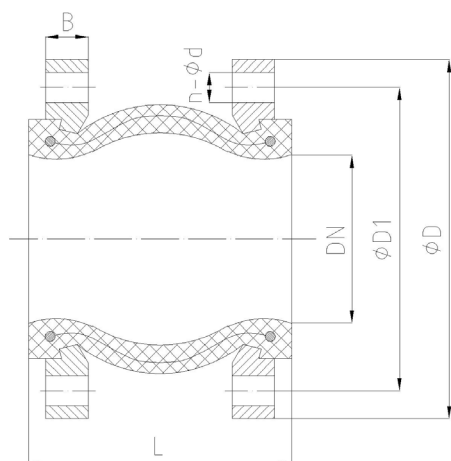
SPECIFICATIONS

DN mm	DN40 - DN600
DN inch	1"1/2 - 24"
Temperature	-10°C to 95°C
Type of body	Flange
Application	Water distribution, Heating and HVAC
Flange	PN 10, PN 16
Options	Other specifications on request

ADVANTAGES

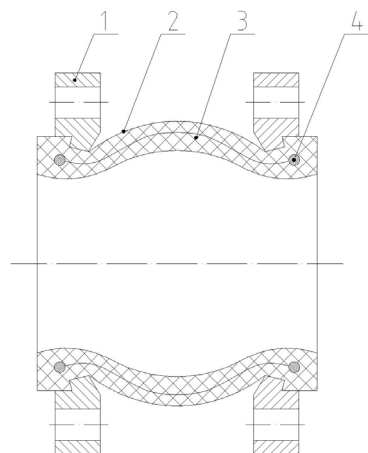
1. Absorb vibration, noises and expansion
2. With galvanised steel flanges connections, stainless steel on request

DIMENSIONS



DN mm	DN inch	PFA	L	ØD	ØD1	B	Str.	Co.	Dis.	Ang.	n-Ød
40	1 1/2	16	95	150	110	19	6	10	9	15°	4-Ø19
50	2"	16	105	165	125	19	7	10	10	15°	4-Ø19
65	2 1/2	16	115	185	145	19	7	13	12	15°	4-Ø19
80	3"	16	130	200	160	19	8	15	12	15°	8-Ø19
100	4"	16	135	220	180	19	10	19	13	15°	8-Ø19
125	5"	16	170	250	210	19	12	19	13	15°	8-Ø19
150	6"	16	180	285	240	19	12	20	14	15°	8-Ø23
200	8"	10	205	340	295	20	16	25	22	15°	12-Ø23 8-Ø23
250	10"	10	240	405 395	355 350	22	16	25	22	15°	12-Ø28 12-Ø23
300	12"	10	260	460 445	410 400	25	16	25	22	15°	12-Ø28 12-Ø23
350	14"	8	265	520 505	470 460	27	16	25	22	15°	16-Ø28 16-Ø23
400	16"	8	265	580 565	525 515	28	16	25	22	15°	16-Ø31 16-Ø28
450	18"	8	265	640 615	585 565	30	16	25	22	15°	20-Ø31 20-Ø28
500	20"	8	265	715 670	650 620	32	16	25	22	15°	20-Ø34 20-Ø28
600	24"	8	265	840 780	770 725	36	16	25	22	15°	20-Ø37 20-Ø31

NOMENCLATURE



Designation	Materials
1.Flange	Ductile iron
2.Rubber	EPDM
3.Key frame	Nylon cord fabric
4.Pressurized ring	Steel

