



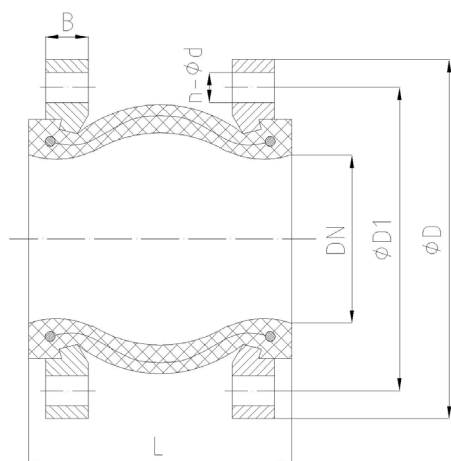
### SPECIFICATIONS

DN mm	DN40 - DN600
DN inch	1"1/2 - 24"
Temperature	-10°C to 95°C
Type of body	Flange
Application	Water distribution, Heating and HVAC
Flange	PN 10, PN 16
Options	Other specifications on request

### ADVANTAGES

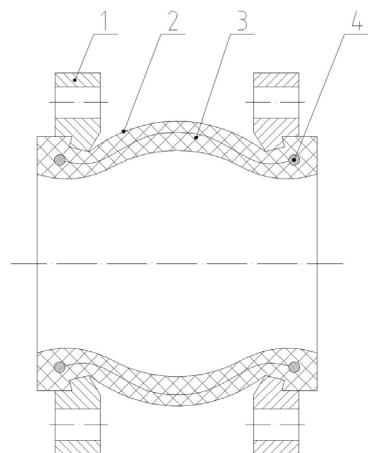
1. Absorb vibration, noises and expansion
2. With galvanised steel flanges connections, stainless steel on request

## DIMENSIONS



DN mm	DN inch	PFA	L	ØD	ØD1	B	Str.	Co.	Dis.	Ang.	n-Ød
40		16	95	150	110	19	6	10	9	15°	4-Ø19
50	2"	16	105	165	125	19	7	10	10	15°	4-Ø19
65		16	115	185	145	19	7	13	12	15°	4-Ø19
80	3"	16	130	200	160	19	8	15	12	15°	8-Ø19
100	4"	16	135	220	180	19	10	19	13	15°	8-Ø19
125	5"	16	170	250	210	19	12	19	13	15°	8-Ø19
150	6"	16	180	285	240	19	12	20	14	15°	8-Ø23
200	8"	10	205	340	295	20	16	25	22	15°	12-Ø23 8-Ø23
250	10"	10	240	405 395	355 350	22	16	25	22	15°	12-Ø28 12-Ø23
300	12"	10	260	460 445	410 400	25	16	25	22	15°	12-Ø28 12-Ø23
350	14"	8	265	520 505	470 460	27	16	25	22	15°	16-Ø28 16-Ø23
400	16"	8	265	580 565	525 515	28	16	25	22	15°	16-Ø31 16-Ø28
450	18"	8	265	640 615	585 565	30	16	25	22	15°	20-Ø31 20-Ø28
500	20"	8	265	715 670	650 620	32	16	25	22	15°	20-Ø34 20-Ø28
600	24"	8	265	840 780	770 725	36	16	25	22	15°	20-Ø37 20-Ø31

## NOMENCLATURE



Designation	Materials
1.Flange	Steel
2.Rubber	EPDM
3.Key frame	Nylon cord fabric
4.Pressurized ring	Steel

