



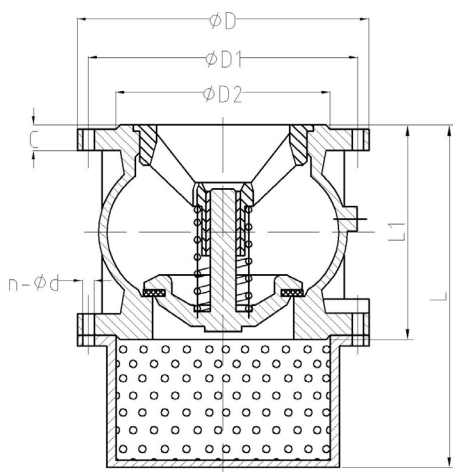
SPECIFICATIONS

DN mm	DN50 - DN300
DN inch	2" - 12"
Temperature	EPDM. -10°C to 120°C
Type of body	Flange
Application	Pumping, Clear water
Flange	PN 10, PN 16
Valve design standard	EN 12334, ASME B16.1, ASME B16.42
Flange drilling	EN 1092-2
Tightness test (according to EN 12266-1)	Resistance and tightness of the body (1.5 x allowable operating pressure), Tightness of the seat (1.1 x allowable operating pressure)
Medium	Clear water, Fire protection networks, Pumping stations
Options	Other specifications on request

ADVANTAGES

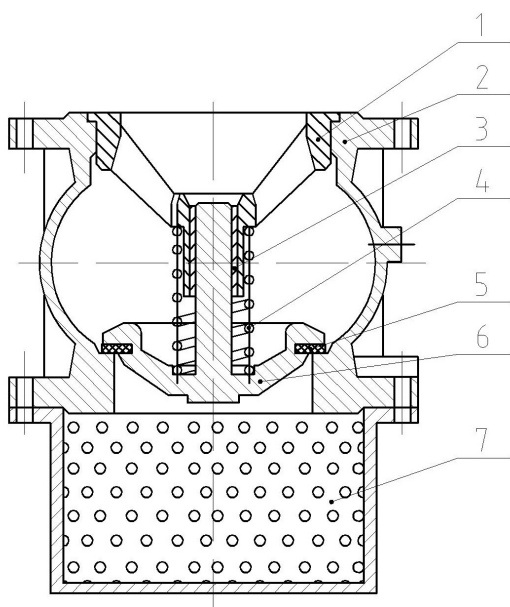
1. Hydraulic design to reduce head loss and water hammer
2. Any position installation
3. Excellent tightness assured by closing system
4. Silent operation
5. Robust closing system design
6. Stainless steel spring to assure frequent opening / closing operation
7. Easy maintenance: the guide can be removed easily
8. Lateral body bosses can be drilled on request to enable the mounting of pressure gauge
9. Cable-pass for pump
10. Several types of strainer available: Galvanized steel, WCB, Stainless steel 304

DIMENSIONS



DN mm	DN inch	PFA	ØD	ØD1	ØD2	C	L1	L	n-Ød
50	2"	16	165	125	99	17	100	177	4-Ø19
65	2 1/2"	16	185	145	118	17	120	217	4-Ø19
80	3"	16	200	160	132	19	140	257	8-Ø19
100	4"	16	220	180	156	21	170	315	8-Ø19
125	5"	16	250	210	184	23	200	367	8-Ø19
150	6"	16	285	240	211	23	230	427	8-Ø23
200	8"	16 10	340	295	266	27	301	548	12-Ø23 8-Ø23
250	10"	16 10	405	355	319	29	370	667	12-Ø28 12-Ø23
300	12"	16 10	460	410	370	29	410	757	12-Ø28 12-Ø23

NOMENCLATURE



Designation	Materials
1. Guide	Ductile iron GGG40
2. Body	Cast iron GG25
3. Guide sleeve	PTFE
4. Spring	Stainless Steel 316
5. Seal gasket	EPDM
6. Disc	Ductile iron GGG40
7. Strainer	Galvanised steel

HEADLOSS

