



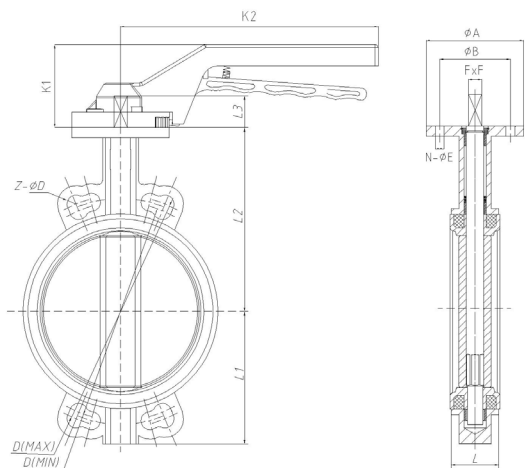
SPECIFICATIONS

DN mm	DN50 - DN300
DN inch	2" - 12"
Liner	EPDM, NBR
Temperature	EPDM 0°C to 100°C NBR 0°C to 80°C
Type of body	Lug, Wafer
Application	EPDM : Hot water, Cold water, HVAC, Irrigation NBR : Hydrocarbons, Waste water, Sea water, Fuel, Natural gas, Oil, Grease, Compressed air, Glycol
Flange	PN10, PN10/16, PN16 (JIS 10K + ANSI - ASA 150 for wafer body)
Valve Standard	API 609
Face to face	EN 558-1 series 20, ISO 5752 series 20, API 609 table 2, DIN3202
Shell tightness test	According to API 598 resistance and tightness of the body : test P11 (1,5 x allowable operating pressure)
Seat tightness test	According to API 598 seat tightness : test P12 rate A (1,1 x allowable operating pressure)
Top flange	EN ISO 5211
Options	Other specifications on request

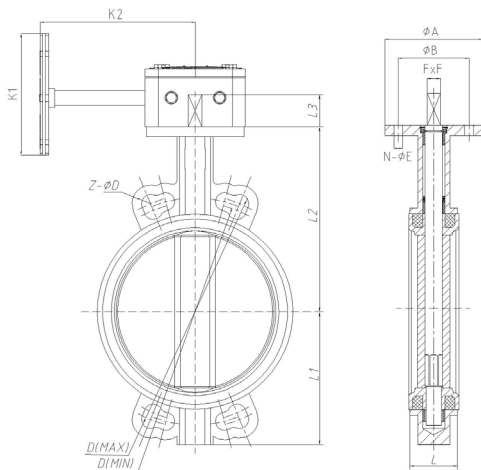
ADVANTAGES

- Can be used in cutting off and regulating medium
- Easy installation and maintenance, it also can be mounted wherever needed
- Simple, compact structure, quick 90 degree on-off operation
- Disc has two way bearing, which can be without leakage under the pressure test
- Center disc structure, to make sure small torque of open and close

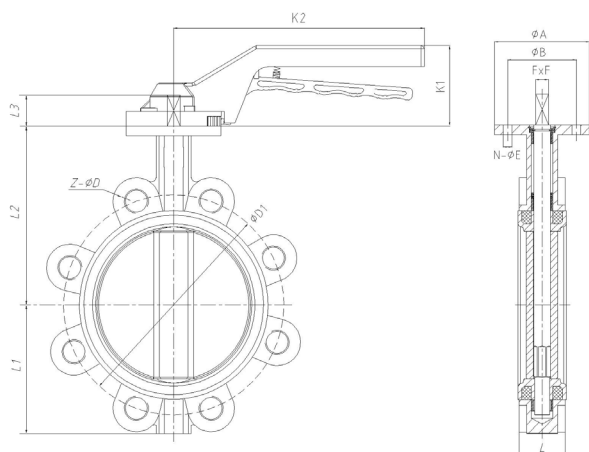
DIMENSIONS



DN mm	DN inch	PFA	L	L1	L2	K1	K2	D (Min)	D (Max)	Z - ØD
50	2"	16	43	66	132	72	190	105	125	4 - Ø18
65	2 1/2"	16	46	86	140	72	190	130	145	4 - Ø18
80	3"	16	46	94	154	72	190	145	160	4 - Ø18
100	4"	16	52	110	173	76	239	165	180	4 - Ø18
125	5"	16	56	128	189	76	283	200	210	4 - Ø18
150	6"	16	56	141	199	76	283	230	240	4 - Ø22

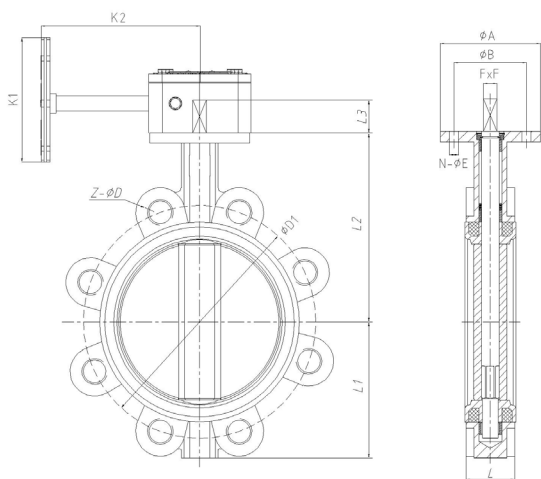


DN mm	DN inch	PFA	L	L1	L2	K1	K2	D (Min)	D (Max)	Z - ØD
50	2"	16	43	66	132	100	105	105	125	4 - Ø18
65	2 1/2"	16	46	86	140	100	105	130	145	4 - Ø18
80	3"	16	46	94	154	100	105	145	160	4 - Ø18
100	4"	16	52	110	173	150	125	165	180	4 - Ø18
125	5"	16	56	128	189	150	125	200	210	4 - Ø18
150	6"	16	56	141	199	150	125	230	240	4 - Ø22
200	8"	16	60	170	236	270	205	280	295	4 - Ø22
250	10"	16	68	205	277	270	205	345	355	4 - Ø26
300	12"	16	78	239	317	270	190	390	410	4 - Ø26
200	8"	10	60	170	236	270	205	280	295	4 - Ø22
250	10"	10	68	205	277	270	205	345	350	4 - Ø22
300	12"	10	78	239	317	270	190	390	400	4 - Ø22



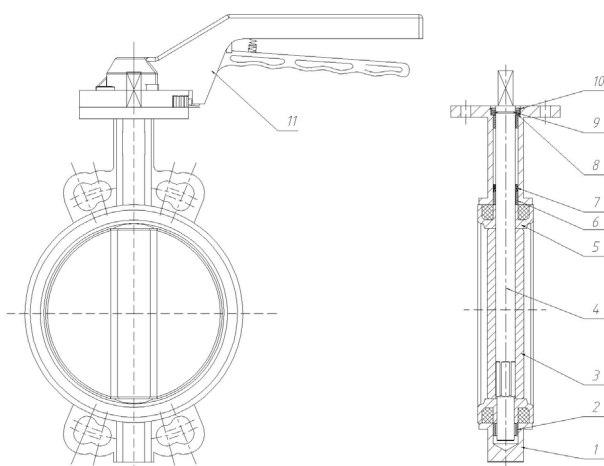
DN mm	DN inch	PFA	L	L1	L2	K1	K2	ØD1	Z - ØD
50	2"	16	43	66	132	72	190	125	4 - M16
65	2 1/2"	16	46	86	140	72	190	145	4 - M16
80	3"	16	46	94	154	72	190	160	8 - M16
100	4"	16	52	110	173	76	239	180	8 - M16
125	5"	16	56	128	189	76	283	210	8 - M16
150	6"	16	56	141	199	76	283	240	8 - M20



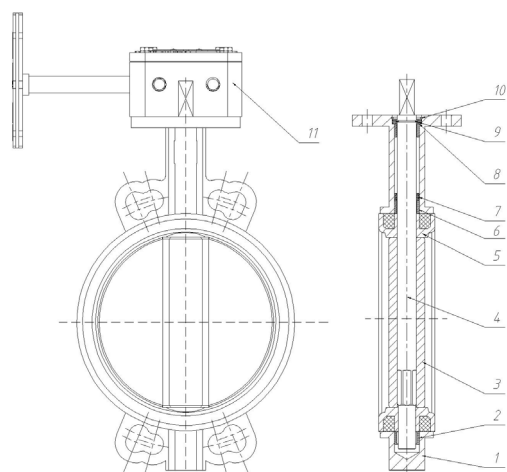


DN mm	DN inch	PFA	L	L1	L2	K1	K2	ØD1	Z-ØD
50	2"	16	43	66	132	100	105	125	4 - M16
65	2 1/2"	16	46	86	140	100	105	145	4 - M16
80	3"	16	46	94	154	100	105	160	8 - M16
100	4"	16	52	110	173	150	125	180	8 - M16
125	5"	16	56	128	189	150	125	210	8 - M16
150	6"	16	56	141	199	150	125	240	8 - M20
200	8"	16	60	170	236	270	205	295	12 - M20
250	10"	16	68	205	277	270	205	355	12 - M24
300	12"	16	78	239	317	270	190	410	12 - M24
200	8"	10	60	170	236	270	205	295	8 - M20
250	10"	10	68	205	277	270	205	350	12 - M20
300	12"	10	78	239	317	270	190	400	12 - M20

NOMENCLATURE

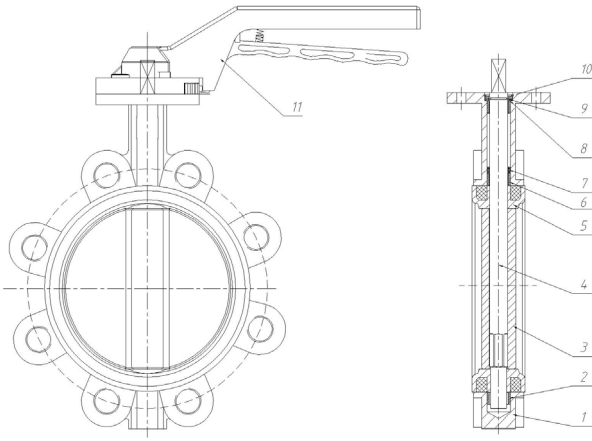


Designation	Materials
1.Body	Cast iron
2.Bushing	PTFE
3.Disc	Ductil iron epoxy coating, Stainless steel 304
4.Stem	Stainless steel 420
5.Seat	EPDM, NBR
6.Bushing	PTFE
7.Y-ring	EPDM, NBR
8.Gasket	Carbon steel
9.Circlip	Steel
10.Circlip	Steel
11.Handlever	Aluminium

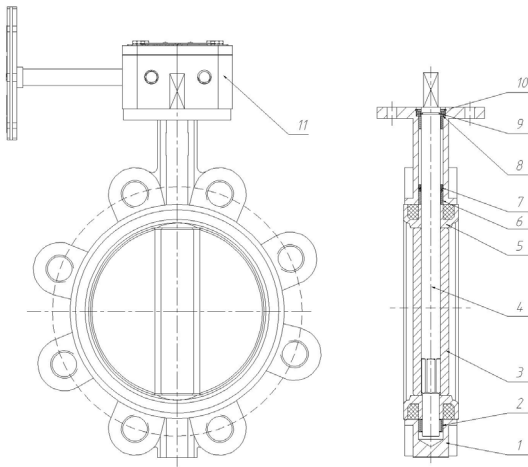


Designation	Materials
1.Body	Cast iron
2.Bushing	PTFE
3.Disc	Ductil iron epoxy coating, Stainless steel 304
4.Stem	Stainless steel 420
5.Seat	EPDM, NBR
6.Bushing	PTFE
7.Y-ring	EPDM, NBR
8.Gasket	Carbon steel
9.Circlip	Steel
10.Circlip	Steel
11.Gearbox	Steel





Designation	Materials
1.Body	Cast iron
2.Bushing	PTFE
3.Disc	Ductil iron epoxy coating, Stainless steel 304
4.Stem	Stainless steel 420
5.Seat	EPDM, NBR
6.Bushing	PTFE
7.Y-ring	EPDM, NBR
8.Gasket	Carbon steel
9.Circlip	Steel
10.Circlip	Steel
11.Handlelever	Aluminium



Designation	Materials
1.Body	Cast iron
2.Bushing	PTFE
3.Disc	Ductil iron epoxy coating, Stainless steel 304
4.Stem	Stainless steel 420
5.Seat	EPDM, NBR
6.Bushing	PTFE
7.Y-ring	EPDM, NBR
8.Gasket	Carbon steel
9.Circlip	Steel
10.Circlip	Steel
11.Gearbox	Steel

