



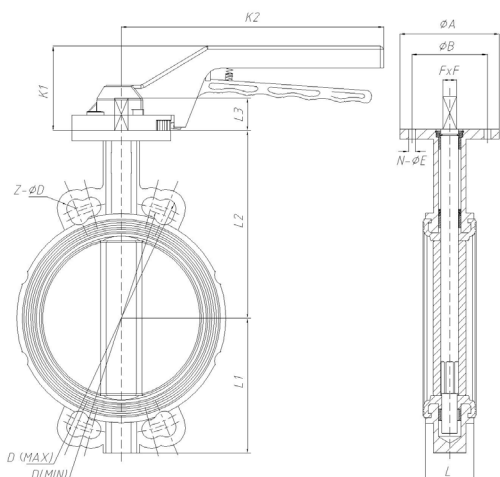
### SPECIFICATIONS

DN mm	DN50 - DN600 (DN700 to DN1200 on request)
DN inch	2" - 24" (28" to 48" on request)
Liner	EPDM, NBR
Temperature	EPDM -10°C to 100°C NBR -10°C to 80°C FKM -5°C to 180°C (on request) Silicone -20°C to 150°C (on request)
Type of body	Lug, Wafer, Double flanges
Application	EPDM : Hot water, Cold water, HVAC, Irrigation NBR : Hydrocarbons, Waste water, Sea water, Fuel, Natural gas, Oil, Grease, Compressed air, Glycol
Flange	PN10, PN10/16, PN16 (JIS 10K + ANSI - ASA 150 for wafer body)
Valve Standard	EN 593
Face to face	EN 558-1 series 20, ISO 5752 series 20, API 609 table 2 (EN 558-1 series 13, ISO 5752 series 13, API 609 table 3C for double flanges)
Shell tightness test	According to EN 12266-1 resistance and tightness of the body : test P11 (1,5 x allowable operating pressure)
Seat tightness test	According to EN 12266-1 seat tightness : test P12 rate A (1,1 x allowable operating pressure)
Top flange	EN ISO 5211
Options	Other specifications on request  Body : Stainless steel 304, Stainless steel 316, Cast steel, Aluminium-Bronze, Aluminium Seat : PTFE Disc : Stainless steel 304, Duplex, Aluminium-Bronze, Hastelloy, Nickel-Chromium cast iron. Stem : Stainless steel 416, Stainless steel 304, Stainless steel 316, Duplex, Monel

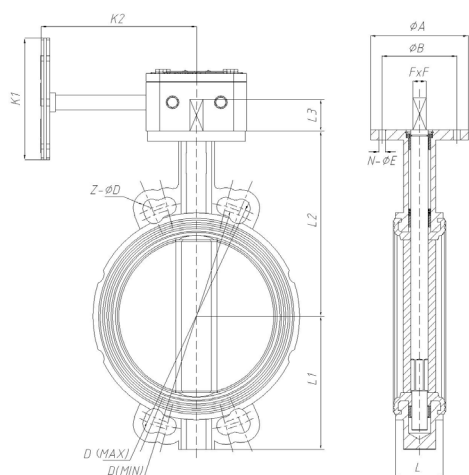
### ADVANTAGES

- Omeax Z200 butterfly guarantee perfect tightness thanks to precise machining of disc and body.
- 1 piece hexagon shape shaft and disc design assure low and stable torque from DN25-DN350. Above size 2 pcs shaft.
- The spherical disc allows the disc to have equal penetration of disc into the liner to avoid leakage.
- Tongue and groove design (dove tail) to assure perfect tightness.
- Higher Cv factor and low turbulence.
- Replacable liner to enable easy replacement and maintenance.
- Extended neck for insulation - no fabricated extensions required.
- Epoxy coating no less than 130µm on valve body, special thickness on request.
- Many configurations possible.

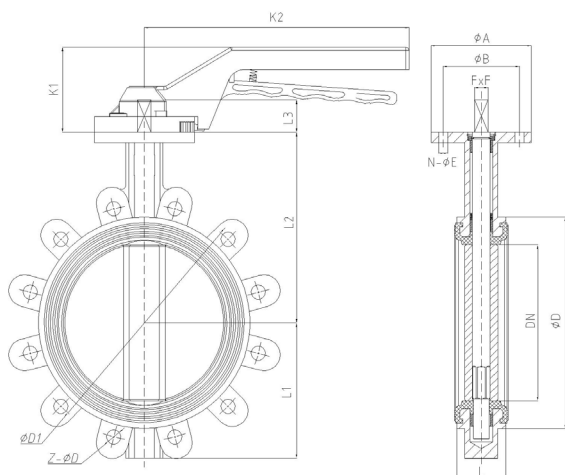
# DIMENSIONS



DN mm	DN inch	PFA	L	L1	L2	K1	K2	D (Min)	D (Max)	Z - ØD
50	2"	16	43	66	132	72	190	105	125	4 - Ø18
65	2 1/2"	16	46	86	140	72	190	130	145	4 - Ø18
80	3"	16	46	94	154	72	190	145	160	4 - Ø18
100	4"	16	52	110	173	76	239	165	180	4 - Ø18
125	5"	16	56	128	189	76	283	200	210	4 - Ø18
150	6"	16	56	141	199	76	283	230	240	4 - Ø22

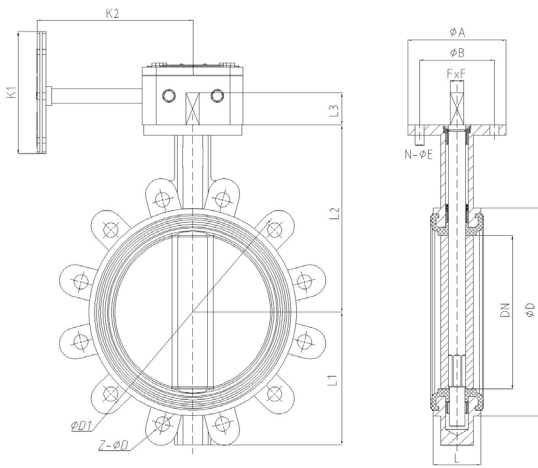


DN mm	DN inch	PFA	L	L1	L2	K1	K2	D (Min)	D (Max)	Z - ØD
50	2"	16	43	66	132	100	105	105	125	4 - Ø18
65	2 1/2"	16	46	86	140	100	105	130	145	4 - Ø18
80	3"	16	46	94	154	100	105	145	160	4 - Ø18
100	4"	16	52	110	173	150	125	165	180	4 - Ø18
125	5"	16	56	128	189	150	125	200	210	4 - Ø18
150	6"	16	56	141	199	150	125	230	240	4 - Ø22
200	8"	16	60	170	236	270	205	280	295	4 - Ø22
250	10"	16	68	205	277	270	205	345	355	4 - Ø26
300	12"	16	78	239	317	270	190	390	410	4 - Ø26
350	14"	16	78	265	360	270	190	435	470	4 - Ø26
400	16"	16	86	302	390	350	245	495	525	4 - Ø30
450	18"	16	105	330	412	350	245	555	585	4 - Ø30
500	20"	16	127	366	470	350	245	605	650	4 - Ø33
600	24"	16	154	438	533	350	300	715	770	4 - Ø36
200	8"	10	60	170	236	270	205	280	295	4 - Ø22
250	10"	10	68	205	277	270	205	345	350	4 - Ø22
300	12"	10	78	239	317	270	190	390	400	4 - Ø22
350	14"	10	78	265	360	270	190	435	460	4 - Ø22
400	16"	10	86	302	390	350	245	495	515	4 - Ø26
450	18"	10	105	330	412	350	245	555	565	4 - Ø26
500	20"	10	127	366	470	350	245	605	620	4 - Ø26
600	24"	10	154	438	533	350	300	715	725	4 - Ø30

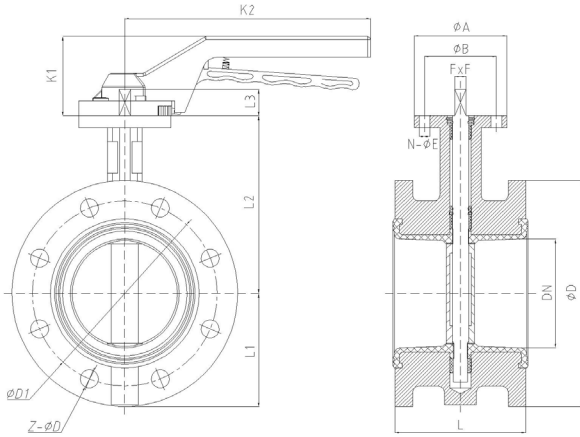


DN mm	DN inch	PFA	L	L1	L2	K1	K2	ØD	ØD1	Z - ØD
50	2"	16	43	66	132	72	190	92	125	4 - M16
65	2 1/2"	16	46	86	140	72	190	105	145	4 - M16
80	3"	16	46	94	154	72	190	125	160	8 - M16
100	4"	16	52	110	173	76	239	151	180	8 - M16
125	5"	16	56	128	189	76	283	185	210	8 - M16
150	6"	16	56	141	199	76	283	206	240	8 - M20

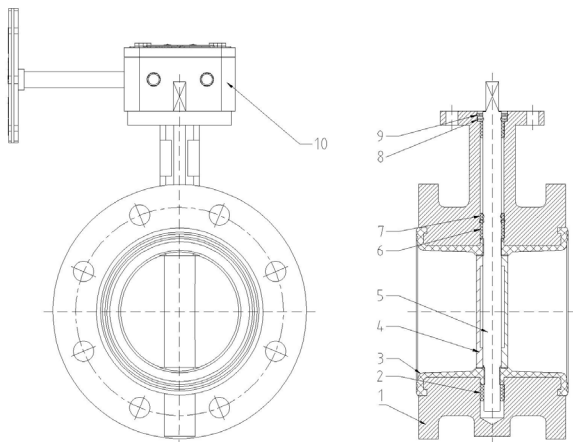




DN mm	DN inch	PFA	L	L1	L2	K1	K2	ØD	ØD1	Z - ØD
50	2"	16	43	66	132	100	105	92	125	4 - M16
65	2 1/2"	16	46	86	140	100	105	105	145	4 - M16
80	3"	16	46	94	154	100	105	125	160	8 - M16
100	4"	16	52	110	173	150	125	151	180	8 - M16
125	5"	16	56	128	189	150	125	185	210	8 - M16
150	6"	16	56	141	199	150	125	206	240	8 - M20
200	8"	16	60	170	236	270	205	265	295	12 - M20
250	10"	16	68	205	277	270	205	322	355	12 - M24
300	12"	16	78	239	317	270	190	374	410	12 - M24
350	14"	16	78	265	360	270	190	419	470	16 - M24
400	16"	16	86	302	390	350	245	488	525	16 - M27
450	18"	16	105	330	412	350	245	535	585	20 - M27
500	20"	16	127	366	470	350	245	585	650	20 - M30
600	24"	16	154	438	533	350	300	690	770	20 - M33
200	8"	10	60	170	236	270	205	265	295	8 - M20
250	10"	10	68	205	277	270	205	322	350	12 - M20
300	12"	10	78	239	317	270	190	374	400	12 - M20
350	14"	10	78	265	360	270	190	419	460	16 - M20
400	16"	10	86	302	390	350	245	488	515	16 - M24
450	18"	10	105	330	412	350	245	535	565	20 - M24
500	20"	10	127	366	470	350	245	585	620	20 - M24
600	24"	10	154	438	533	350	300	690	725	20 - M27

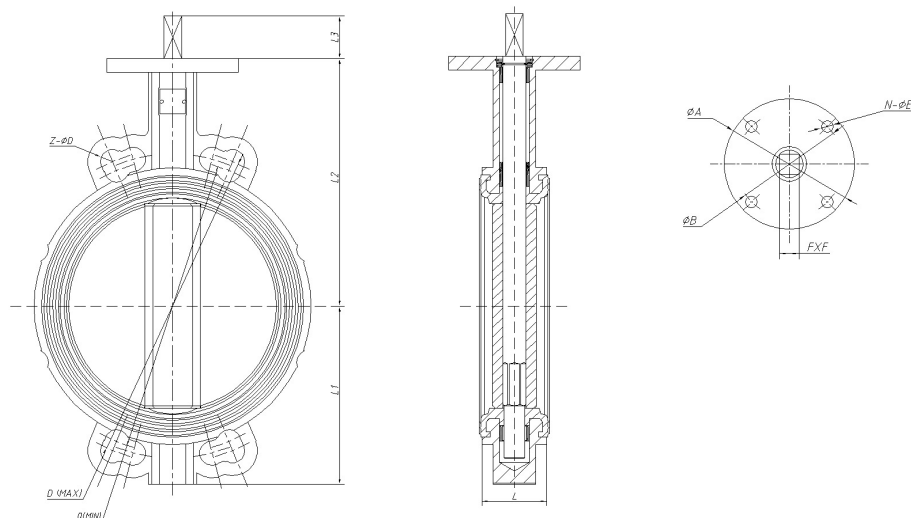


DN mm	DN inch	PFA	L	L1	L2	K1	K2	ØD	ØD1	Z - ØD
50	2"	16	108	66	132	72	190	165	125	4 - Ø19
65	2 1/2"	16	112	86	140	72	190	185	145	4 - Ø19
80	3"	16	114	94	154	72	190	200	160	8 - Ø19
100	4"	16	127	110	173	76	239	220	180	8 - Ø19
125	5"	16	140	128	189	76	283	250	210	8 - Ø19
150	6"	16	140	141	199	76	283	285	240	8 - Ø23



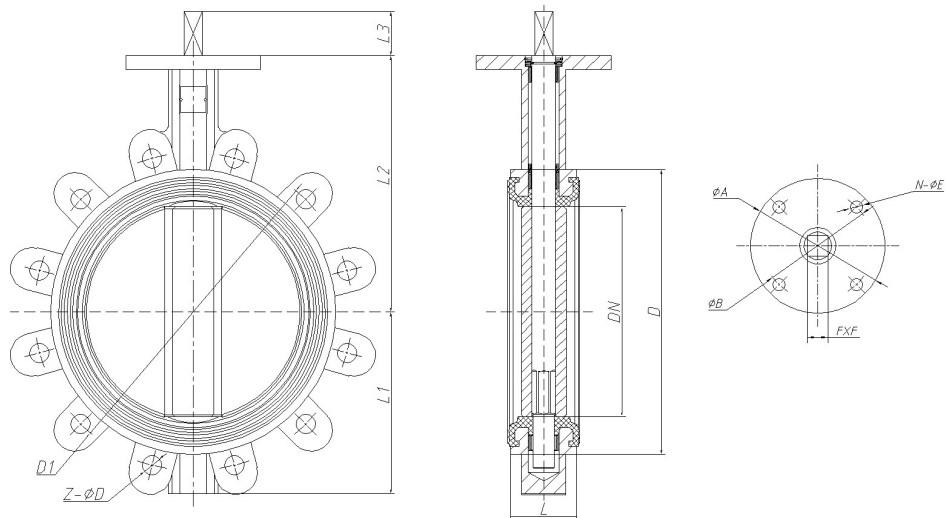
DN mm	DN inch	PFA	L	L1	L2	K1	K2	ØD	ØD1	Z - ØD
50	2"	16	108	66	132	100	105	165	125	4 - Ø19
65	2 1/2"	16	112	86	140	100	105	185	145	4 - Ø19
80	3"	16	114	94	154	100	105	200	160	8 - Ø19
100	4"	16	127	110	173	150	125	220	180	8 - Ø19
125	5"	16	140	128	189	150	125	250	210	8 - Ø19
150	6"	16	140	141	199	150	125	285	240	8 - Ø23
200	8"	16	152	170	236	270	205	340	295	12 - Ø23
250	10"	16	165	205	277	270	205	405	355	12 - Ø28
300	12"	16	178	239	317	270	190	460	410	12 - Ø28
350	14"	16	190	265	360	270	190	520	470	16 - Ø28
400	16"	16	216	302	390	350	245	580	525	16 - Ø31
450	18"	16	222	330	412	350	245	640	585	20 - Ø31
500	20"	16	229	366	470	350	245	715	650	20 - Ø34
600	24"	16	267	438	533	350	300	840	770	20 - Ø37
200	8"	10	152	170	236	270	205	340	295	8 - Ø23
250	10"	10	165	205	277	270	205	395	350	12 - Ø23
300	12"	10	178	239	317	270	190	445	400	12 - Ø23
350	14"	10	190	265	360	270	190	505	460	16 - Ø23
400	16"	10	216	302	390	350	245	565	515	16 - Ø28
450	18"	10	222	330	412	350	245	615	565	20 - Ø28
500	20"	10	229	366	470	350	245	670	620	20 - Ø28
600	24"	10	267	438	533	350	300	780	725	20 - Ø31





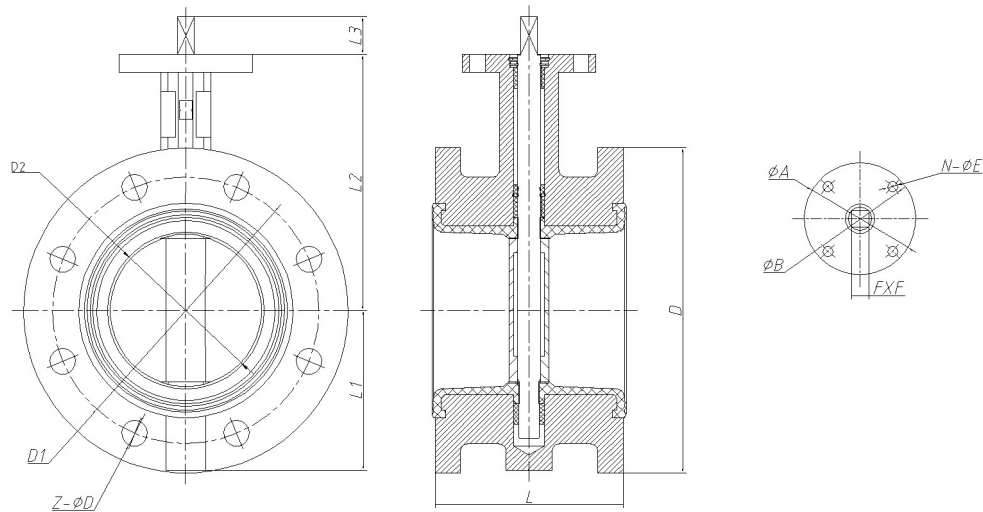
DN mm	DN inch	PFA	L	L1	L2	L3	D (Min)	D (Max)	Z - ØD	ØA	ØB	F x F	N - ØE
50	2"	16	43	66	132	13	105	125	4 - Ø18	70	50	9	4 - Ø7
65	2 1/2"	16	46	86	140	13	130	145	4 - Ø18	70	50	9	4 - Ø7
80	3"	16	46	94	154	13	145	160	4 - Ø18	70	50	9	4 - Ø7
100	4"	16	52	110	173	17	165	180	4 - Ø18	90	70	11	4 - Ø10
125	5"	16	56	128	189	20	200	210	4 - Ø18	90	70	14	4 - Ø10
150	6"	16	56	141	199	20	230	240	4 - Ø22	90	70	14	4 - Ø10
200	8"	16	60	170	236	20	280	295	4 - Ø22	125	102	17	4 - Ø12
250	10"	16	68	205	277	25	345	355	4 - Ø26	125	102	22	4 - Ø12
300	12"	16	78	239	317	30	390	410	4 - Ø26	150	125	22	4 - Ø14
350	14"	16	78	265	360	29	435	470	4 - Ø26	150	125	27	4 - Ø14
400	16"	16	86	302	390	29	495	525	4 - Ø30	175	140	27	4 - Ø18
450	18"	16	105	330	412	29	555	585	4 - Ø30	210	165	27	4 - Ø22
500	20"	16	127	366	470	38	605	650	4 - Ø33	210	165	36	4 - Ø22
600	24"	16	154	438	533	38	715	770	4 - Ø36	210	165	36	4 - Ø22
200	8"	10	60	170	236	20	280	295	4 - Ø22	125	102	17	4 - Ø12
250	10"	10	68	205	277	25	345	350	4 - Ø22	125	102	22	4 - Ø12
300	12"	10	78	239	317	30	390	400	4 - Ø22	150	125	22	4 - Ø14
350	14"	10	78	265	360	29	435	460	4 - Ø22	150	125	27	4 - Ø14
400	16"	10	86	302	390	29	495	515	4 - Ø26	175	140	27	4 - Ø18
450	18"	10	105	330	412	29	555	565	4 - Ø26	210	165	27	4 - Ø22
500	20"	10	127	366	470	38	605	620	4 - Ø26	210	165	36	4 - Ø22
600	24"	10	154	438	533	38	715	725	4 - Ø30	210	165	36	4 - Ø22





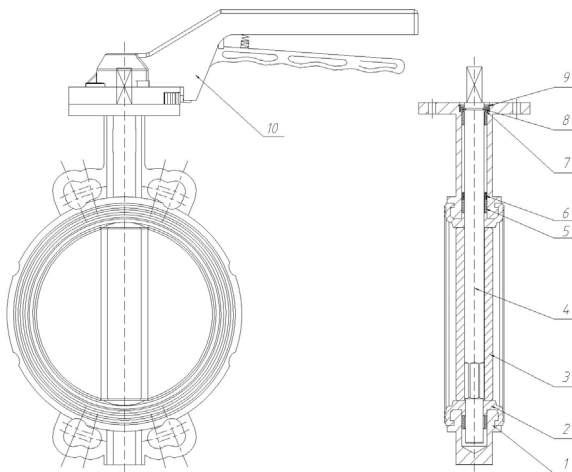
DN mm	DN inch	PFA	L	L1	L2	L3	ØD	ØD1	Z - ØD	ØA	ØB	F x F	N - ØE
50	2"	16	43	66	132	13	92	125	4 - M16	70	50	9	4 - Ø7
65	2 1/2"	16	46	86	140	13	105	145	4 - M16	70	50	9	4 - Ø7
80	3"	16	46	94	154	13	125	160	8 - M16	70	50	9	4 - Ø7
100	4"	16	52	110	173	17	151	180	8 - M16	90	70	11	4 - Ø10
125	5"	16	56	128	189	20	185	210	8 - M16	90	70	14	4 - Ø10
150	6"	16	56	141	199	20	206	240	8 - M20	90	70	14	4 - Ø10
200	8"	16	60	170	236	20	265	295	12 - M20	125	102	17	4 - Ø12
250	10"	16	68	205	277	25	322	355	12 - M24	125	102	22	4 - Ø12
300	12"	16	78	239	317	30	374	410	12 - M24	150	125	22	4 - Ø14
350	14"	16	78	265	360	30	419	470	16 - M24	150	125	27	4 - Ø14
400	16"	16	86	302	390	35	488	525	16 - M27	175	140	27	4 - Ø18
450	18"	16	105	330	412	35	535	585	20 - M27	210	165	27	4 - Ø22
500	20"	16	127	366	470	35	585	650	20 - M30	210	165	27	4 - Ø22
600	24"	16	154	438	533	45	690	770	20 - M33	210	165	36	4 - Ø22
200	8"	10	60	170	236	20	265	295	8 - M20	125	102	17	4 - Ø12
250	10"	10	68	205	277	25	322	350	12 - M20	125	102	22	4 - Ø12
300	12"	10	78	239	317	30	374	400	12 - M20	150	125	22	4 - Ø14
350	14"	10	78	265	360	30	419	460	16 - M20	150	125	27	4 - Ø14
400	16"	10	86	302	390	35	488	515	16 - M24	175	140	27	4 - Ø18
450	18"	10	105	330	412	35	535	565	20 - M24	210	165	27	4 - Ø22
500	20"	10	127	366	470	35	585	620	20 - M24	210	165	27	4 - Ø22
600	24"	10	154	438	533	45	690	725	20 - M27	210	165	36	4 - Ø22



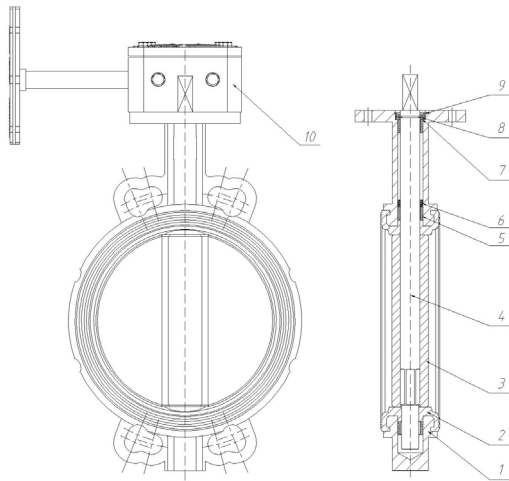


DN mm	DN inch	PFA	L	L1	L2	L3	ØD	ØD1	Z - ØD	A	B	F x F	N - ØE
50	2"	16	108	66	132	13	165	125	4 - Ø19	90	70	9	4 - Ø7
65	2 1/2"	16	112	86	140	13	185	145	4 - Ø19	90	70	9	4 - Ø7
80	3"	16	114	94	154	13	200	160	8 - Ø19	90	70	9	4 - Ø7
100	4"	16	127	110	173	17	220	180	8 - Ø19	90	70	11	4 - Ø10
125	5"	16	140	128	189	20	250	210	8 - Ø19	90	70	14	4 - Ø10
150	6"	16	140	141	199	20	285	240	8 - Ø23	90	70	14	4 - Ø10
200	8"	16	152	170	236	20	340	295	12 - Ø23	125	102	17	4 - Ø12
250	10"	16	165	205	277	25	405	355	12 - Ø28	125	102	22	4 - Ø12
300	12"	16	178	239	317	30	460	410	12 - Ø28	150	125	22	4 - Ø14
350	14"	16	190	265	360	30	520	470	16 - Ø28	150	125	27	4 - Ø14
400	16"	16	216	302	390	35	580	525	16 - Ø31	175	140	27	4 - Ø18
450	18"	16	222	330	412	35	640	585	20 - Ø31	210	165	27	4 - Ø22
500	20"	16	229	366	470	35	715	650	20 - Ø34	210	165	36	4 - Ø22
600	24"	16	267	438	533	45	840	770	20 - Ø37	210	165	36	4 - Ø22
200	8"	10	152	170	236	20	340	295	8 - Ø23	125	102	17	4 - Ø12
250	10"	10	165	205	277	25	395	350	12 - Ø23	125	102	22	4 - Ø12
300	12"	10	178	239	317	30	445	400	12 - Ø23	150	125	22	4 - Ø14
350	14"	10	190	265	360	30	505	460	16 - Ø23	150	125	27	4 - Ø14
400	16"	10	216	302	390	35	565	515	16 - Ø28	175	140	27	4 - Ø18
450	18"	10	222	330	412	35	615	565	20 - Ø28	210	165	27	4 - Ø22
500	20"	10	229	366	470	35	670	620	20 - Ø28	210	165	36	4 - Ø22
600	24"	10	267	438	533	45	780	725	20 - Ø31	210	165	36	4 - Ø22

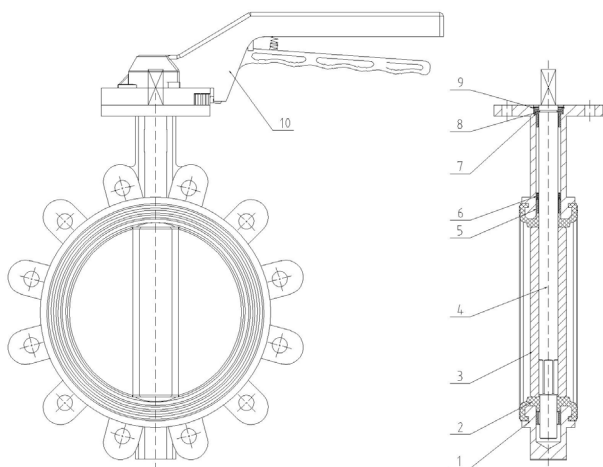




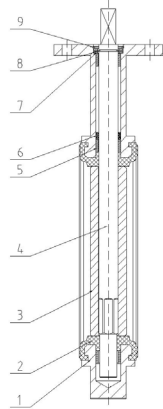
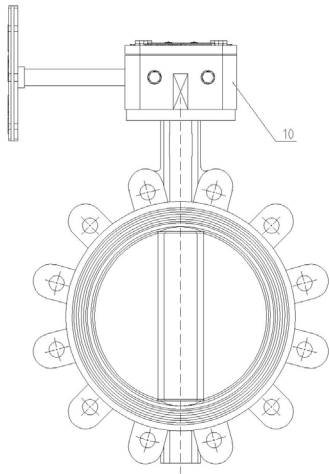
Designation	Materials
1.Body	Cast iron, Ductile iron,
2.Seat	EPDM, NBR
3.Disc	Ductil iron epoxy coating, Stainless steel 316
4.Stem	Stainless steel 420
5.Bushing	PTFE
6.Y-ring	EPDM, NBR
7.Gasket	Carbon steel
8.Circlip	Carbon steel
9.Circlip	Carbon steel
10.Handlever	Aluminium



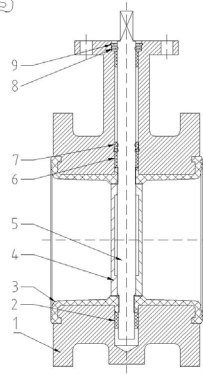
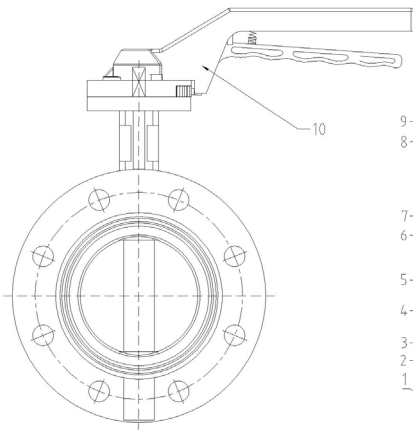
Designation	Materials
1.Body	Cast iron, Ductile iron,
2.Seat	EPDM, NBR
3.Disc	Ductil iron epoxy coating, Stainless steel 316
4.Stem	Stainless steel 420
5.Bushing	PTFE
6.Y-ring	EPDM, NBR
7.Gasket	Carbon steel
8.Circlip	Carbon steel
9.Circlip	Carbon steel
10.Gearbox	Steel



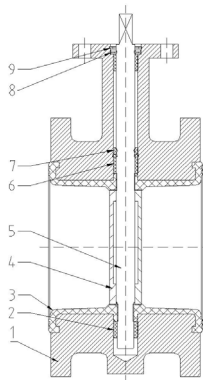
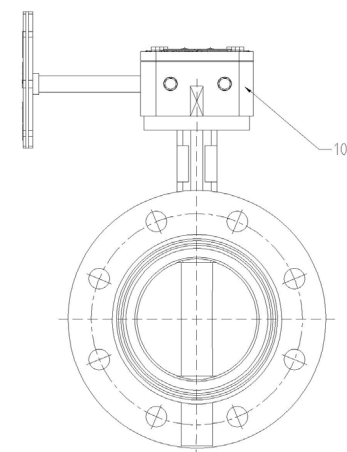
Designation	Materials
1.Body	Cast iron, Ductile iron,
2.Seat	EPDM, NBR
3.Disc	Ductil iron epoxy coating, Stainless steel 316
4.Stem	Stainless steel 420
5.Bushing	PTFE
6.Y-ring	EPDM, NBR
7.Gasket	Carbon steel
8.Circlip	Carbon steel
9.Circlip	Carbon steel
10.Handlever	Aluminium



Designation	Materials
1.Body	Cast iron, Ductile iron,
2.Seat	EPDM, NBR
3.Disc	Ductil iron epoxy coating, Stainless steel 316
4.Stem	Stainless steel 420
5.Bushing	PTFE
6.Y-ring	EPDM, NBR
7.Gasket	Carbon steel
8.Circlip	Carbon steel
9.Circlip	Carbon steel
10.Gearbox	Steel



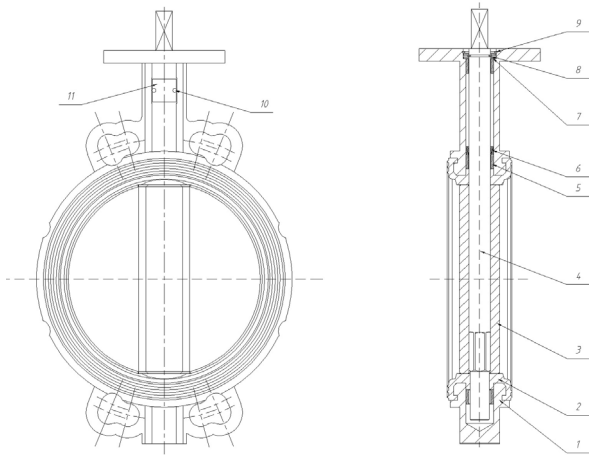
Designation	Materials
1.Body	Cast iron, Ductile iron,
2.Long bushing	PTFE
3.Lining	EPDM, NBR
4.Stem	Stainless steel 420
5.Disc	Ductil iron epoxy coating, Stainless steel 316
6.O-ring	EPDM, NBR
7.Short bushing	PTFE
8.Shaft circlip	Carbon steel
9.Hole circlip	Carbon steel
10.Handlever	Aluminium



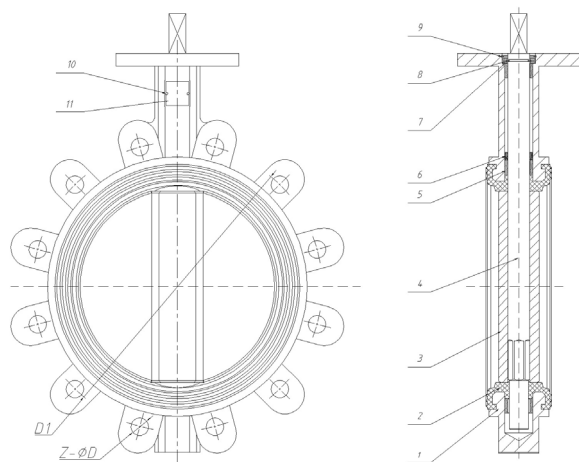
Designation	Materials
1.Body	Cast iron, Ductile iron,
2.Long bushing	PTFE
3.Lining	EPDM, NBR
4.Stem	Stainless steel 420
5.Disc	Ductil iron epoxy coating, Stainless steel 316
6.O-ring	EPDM, NBR
7.Short bushing	PTFE
8.Shaft circlip	Carbon steel
9.Hole circlip	Carbon steel
10.Gearbox	Steel



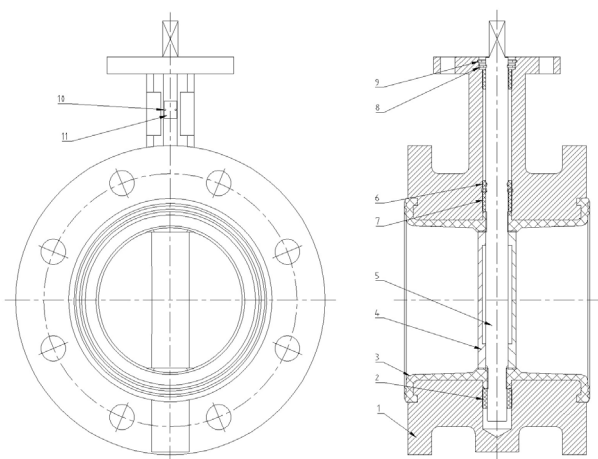




Designation	Materials
1.Body	Cast iron, Ductile iron,
2.Seat	EPDM, NBR
3.Disc	Ductil iron epoxy coating, Stainless steel 316
4.Stem	Stainless steel 420
5.Bushing	PTFE
6.Y-ring	EPDM, NBR
7.Gasket	Carbon steel
8.Circlip	Carbon steel
9.Circlip	Carbon steel
10.Plate rivet	Aluminium
11.Name plate	Aluminium

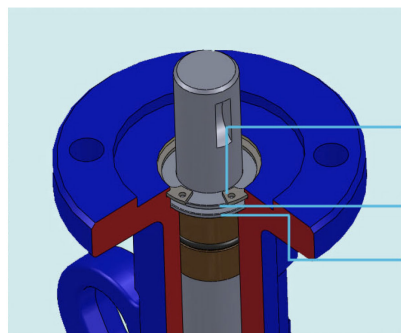
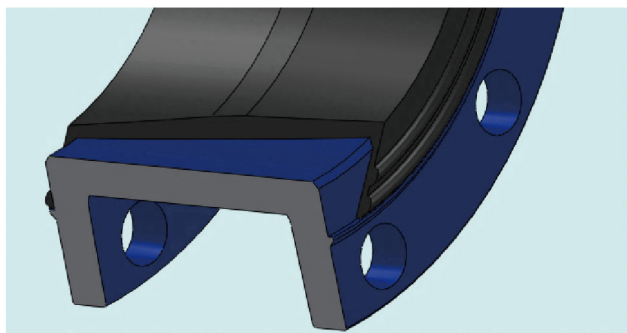
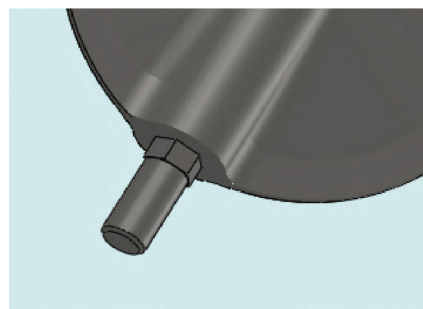
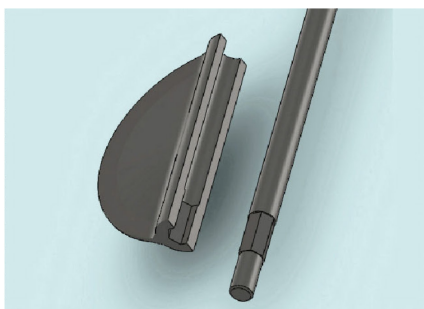
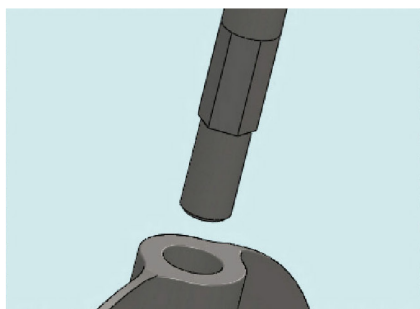
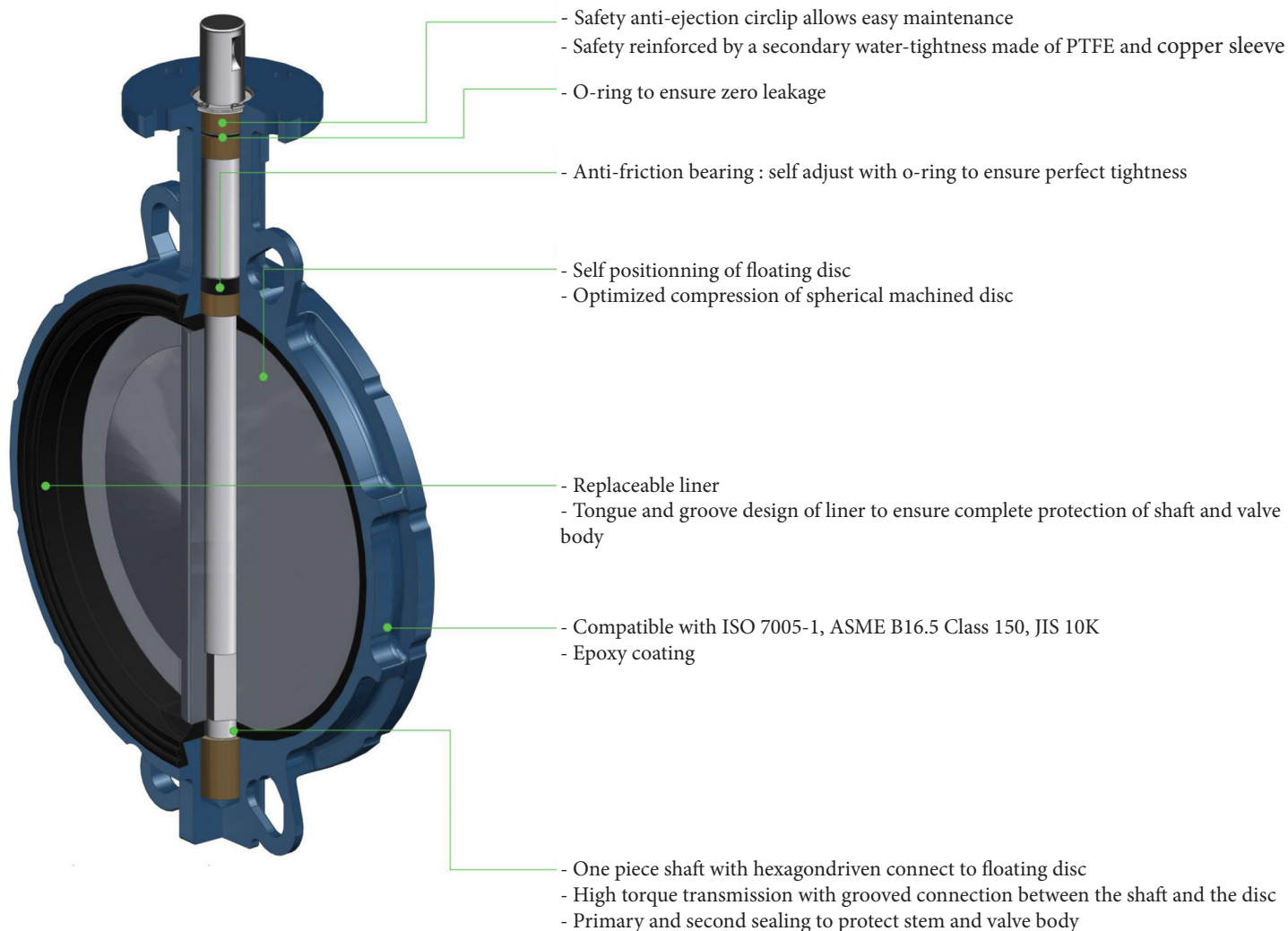


Designation	Materials
1.Body	Cast iron, Ductile iron,
2.Seat	EPDM, NBR
3.Disc	Ductil iron epoxy coating, Stainless steel 316
4.Stem	Stainless steel 420
5.Bushing	PTFE
6.Y-ring	EPDM, NBR
7.Gasket	Carbon steel
8.Circlip	Carbon steel
9.Circlip	Carbon steel
10.Plate rivet	Aluminium
11.Name plate	Aluminium



Designation	Materials
1.Body	Cast iron, Ductile iron,
2.Long bushing	PTFE
3.Lining	EPDM, NBR
4.Stem	Stainless steel 420
5.Disc	Ductil iron epoxy coating, Stainless steel 316
6.O-ring	EPDM, NBR
7.Short bushing	PTFE
8.Shaft circlip	Carbon steel
9.Hole circlip	Carbon steel
10.Plate rivet	Aluminium
11.Name plate	Aluminium





- Body circlip
- Stem retaining washer
- Stem circlip

## TORQUE TABLE

---

Torque are given in N.m for EPDM liner with water at 25°C.  
Safety factor not include.

DN mm	DN inch	PFA 16
50	2"	11
65	2"1/2	23
80	3"	30
100	4"	49
125	5"	62
150	6"	108
200	8"	196
250	10"	281
300	12"	422
350	14"	821
400	16"	996
450	18"	1232
500	20"	2659
600	24"	3920

