



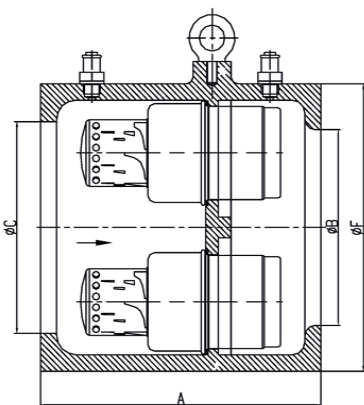
SPECIFICATIONS

DN mm	DN 50 - DN 400
DN inch	2" - 16"
Temperature	-10°C to 70°C
Type of body	Wafer
Application	Clear water, fire protection, irrigation, sewage
Connection	Flanged EN 1092-2
Test	EN 12266-2 (test body safety and tightness, test seat tightness)
Options	Other specifications on request

ADVANTAGES

Automatic Balancing Valve is mainly used for solving problem of hydraulic disorder in flow pipe. It can keep flow in the pipe constant when pressure fluctuate in operating differential pressure. With the fluctuation of pressure, Automatic balancing valve core will move automatically to change the aperture, thus to keep the constant flow; So long as water differential pressure is within parameter, it can regulate equipment to reach required flow without any external force. Compact design saves installation room; simplified the computing workload of pipe system when designing; it is convenient to install. There is no need to do balance adjustment before running; stainless steel valve core assures corrosion resistance and long life which is a new energy-saving product at home and abroad. The differential pressure before and after should meet the requirement in the design phrase.

DIMENSIONS

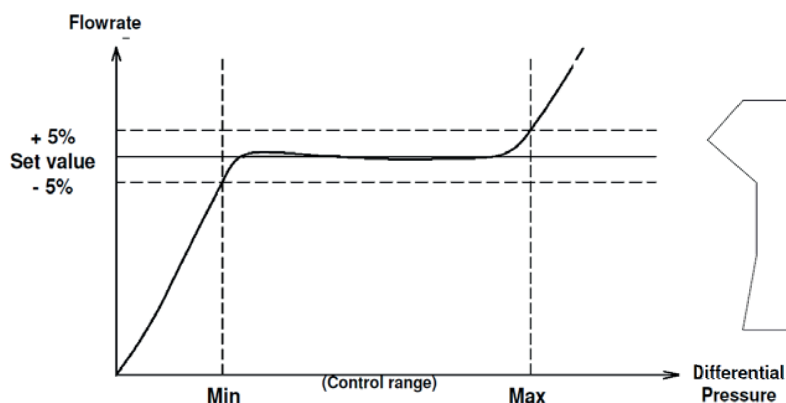


DN mm	DN inch	PFA	A	ØB	ØC	ØF
50	2"	25	180	50		106
65	2"1/2	25		65	83	120
80	3"	25		80		132
100	4"	25		100	133	177
125	5"	25	220	125	140	193
150	6"	25		150	162	220
200	8"	25		200	214	280
250	10"	25		250	280	341
300	12"	25	223	300	328	400
350	14"	25		350	382	448
400	16"	25	242	400	440	510

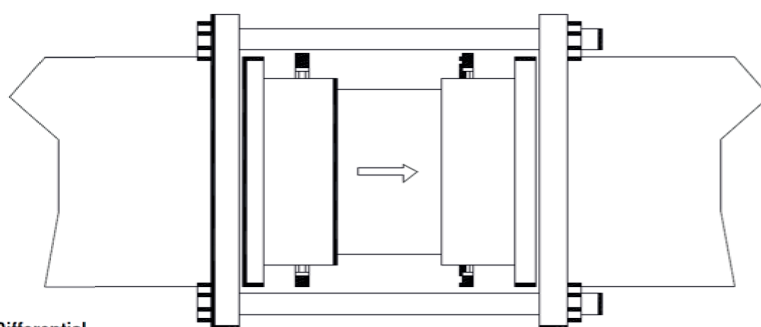
PARAMETER SELECTION SHEET

Differential Pressure Kpa		15~150	22~210	33~330	90~900
Flow (m ³ /h)	DN50				
	DN65	2~15	3~19	3~23	6~38
	DN80				
	DN100	2~52	3~66	3~84	6~130
	DN125	2~78	3~99	3~126	6~195
	DN150	2~104	3~132	3~168	6~260
	DN200	2~182	3~231	3~294	6~455
	DN250	2~286	3~363	3~462	6~715
	DN300	2~390	3~495	3~630	6~975
	DN350	2~520	3~660	3~840	6~1300
DN400	2~650	3~825	3~1050	6~1625	

FUNCTIONS



Flowrate-Differential Pressure Characteristic Curve

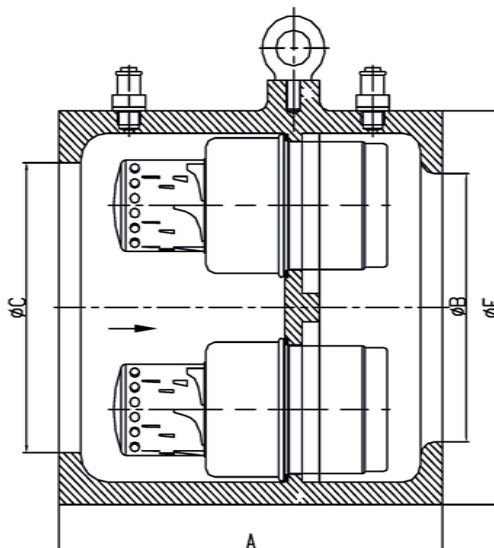
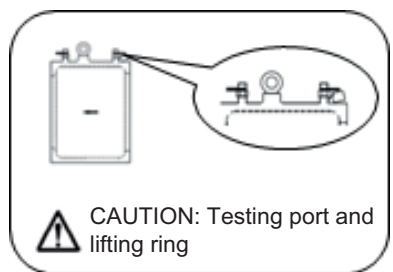
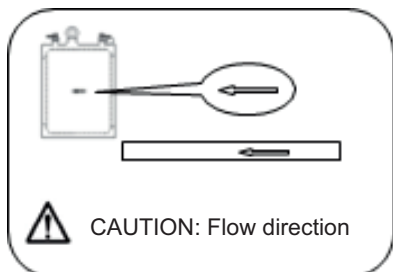


Flow direction
Wafer type connection



INSTALLATION INSTRUCTIONS

- Read these instructions carefully. Check the product model.
- The product has been calibrated before delivery. Do not disassemble the valve.
- Clean the pipe before install the valve.
- Count in a straight run of at least ten pipe diameters upstream and five pipe diameters downstream.



Dimensions:

Flange Standard : ISO7005-2

Body tapings: 3/8-24 UNF