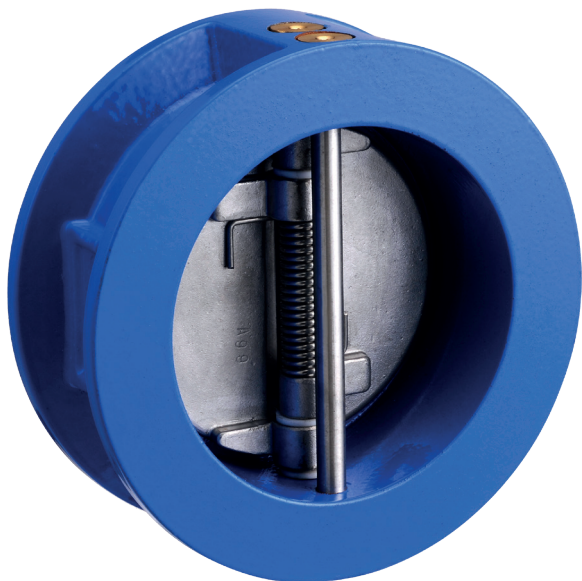


## SPECIFICATIONS

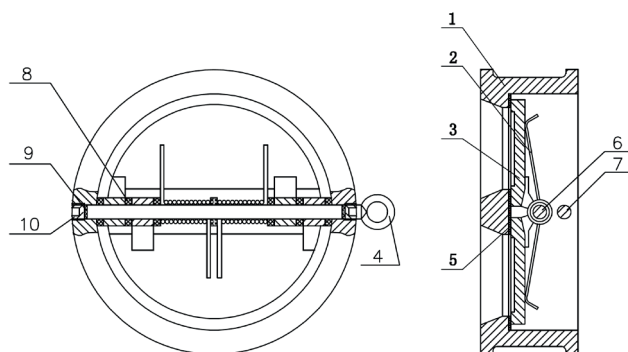
DN mm	DN 40 - DN 700 PN25: DN 40 - DN 300
DN inch	1"1/2" - 28 " PN25: 1"1/2- 12"
Temperature	EPDM: -10°C to 120°C NBR: -10° to 80°C
Type of body	Wafer
Application	Water, general industry, production processes, hydrocarbons, transmission pipeline
Flange	PN 10, PN 16, PN25
Options	Other specifications on request



## ADVANTAGES

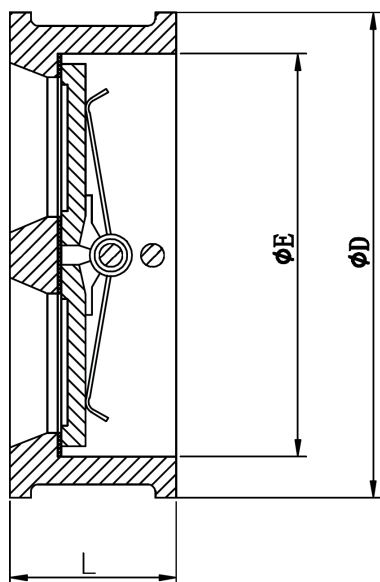
1. Compact design for optimized space utilization.
2. Vulcanized seat seal ensures reliable watertightness.
3. Superior hydraulic performance.
4. Minimal energy loss during operation.
5. Stainless steel spring applies consistent pressure on the seat seal through the dual plates.
6. Gradual opening enabled by dual-contact spring mechanism for smooth flow control.
7. Suitable for horizontal or vertical installation (upward flow direction only).

## NOMENCLATURE



Designation	Materials
1.Body	Ductile iron epoxy coated
2.Spring	Stainless steel
3.Disc	Stainless steel 304/aluminium-Bronze
4.Ring	Steel
5.Seat	EPDM/NBR
6.Shaft	Stainless steel 304
7.Shaft	Stainless steel 304
8.Gasket	PTFE
9.Gasket	NBR
10.Stub screw	Steel

## DIMENSIONS



DN mm	DN inch	PFA	L	ØE	ØD
40	1 1/2	16	43	65	92
		25			
50	2"	16	46	80	107
		25			
65	2 1/2	16	64	94	127
		25			
80	3"	16	70	117	142
		25			
100	4"	16	76	145	162
		25			
125	5"	16	89	170	192
		25			
150	6"	16	114	224	218
		25			
200	8"	16	127	265	273
		25			
250	10"	16	140	312	329
		10			328
		25	152	360	329
		10			384
300	12"	16	178	410	378
		10			384
		25	229	450	446
		10			438
350	14"	16	229	500	498
		10			489
400	16"	16	229	500	550
		10			532
450	18"	16	229	500	610
		10			585
500	20"	16	229	500	720
		10			690
600	24"	16	229	500	800
		10			
700	28"	16	229	500	
		10			

## HEADLOSS

