



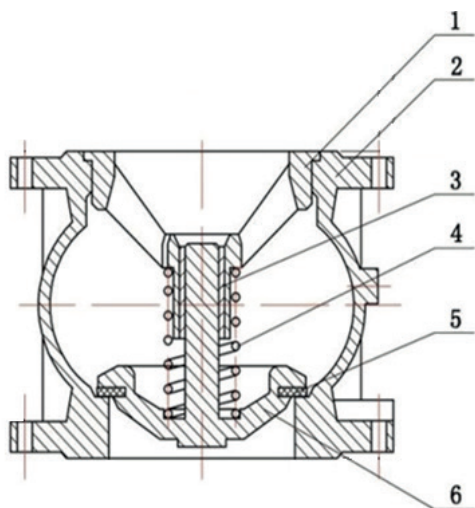
SPECIFICATIONS

DN mm	DN 50 - DN 350
DN inch	2" - 14 "
Temperature	EPDM 0°C to 90°C
Type of body	Flanged
Application	Clear water, fire protection networks, pumping stations
Flange	PN10/16
Valve design standard	EN 12334, ASME B16.1, ASME B16.42
Flange drilling	EN 1092-2
Tightness test (according to EN 12266-1)	Resistance and tightness of the body (1.5 x allowable operating pressure), tightness of the seat, (1.1 x allowable operating pressure)
Options	Other specifications on request

ADVANTAGES

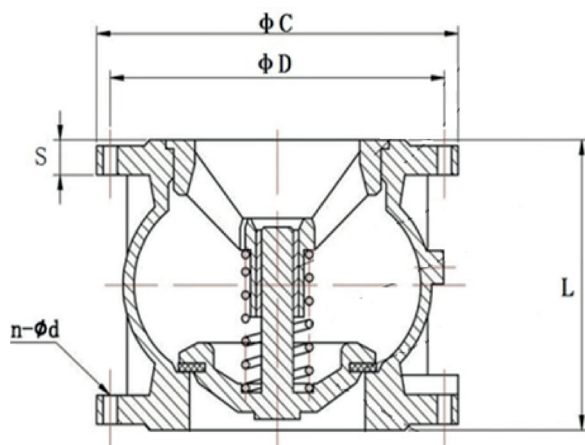
1. Hydraulic design to reduce head loss and water hammer.
2. Any position installation.
3. Excellent tightness assured by closing system.
4. Silent operation.
5. Robust closing system design.
6. Stainless steel spring to assure frequent opening/closing operation.
7. Maintenance: the guide can be removed easily.
8. Option: 2 drilled bosses 1/2" and plugged for by-pass, control or evacuation.
9. Cable-pass for pump.

NOMENCLATURE



Designation	Materials
1. Guide	Ductile iron GGG40
2. Body	Cast iron GGG25
3. Guiding stem	PTFE
4. Spring	Stainless steel 316
5. Seal	EPDM
6. Closing system	Ductile iron GGG40

DIMENSIONS

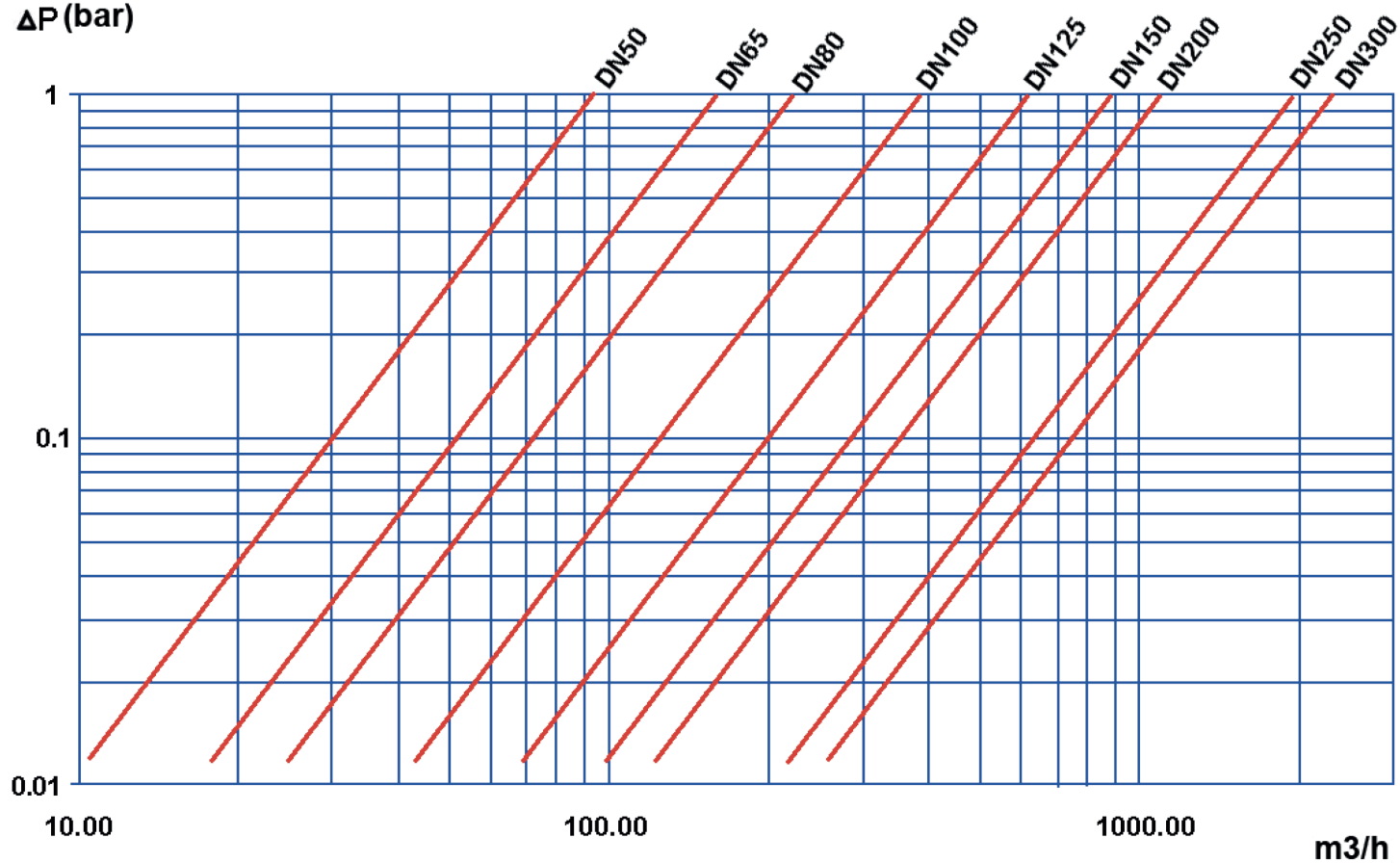


DN mm	DN inch	PFA	L	ØC	ØD	S	N-Ød
50	2"	PN10/16	100	165	125	17	4-Ø19
65	2 1/2"	PN10/16	120	185	145	19	4-Ø19
80	3"	PN10/16	140	200	160	21	8-Ø19
100	4"	PN10/16	170	220	180	23	8-Ø19
125	5"	PN10/16	200	250	210	27	8-Ø19
150	6"	PN10/16	230	285	240	29	8-Ø23
200	8"	PN10*	301	340	295	30	8-Ø23
250	10"	PN10*	370	405	350	30	12-Ø23
300	12"	PN10*	410	460	400	30	12-Ø23
350	14"	PN10*	473	520	460	30	12-Ø23

*PN16 on request

HEADLOSS

ΔP (bar)



Omeax SAS

contact@omeax.com - <http://www.omeax.com>

The descriptions and photographs contained in this product specification sheet are supplied by way of information only and are not binding. Omeax reserves the right to carry out any technical and design improvements to its products without prior notice.

24/06/25
Page 3