



SPECIFICATIONS

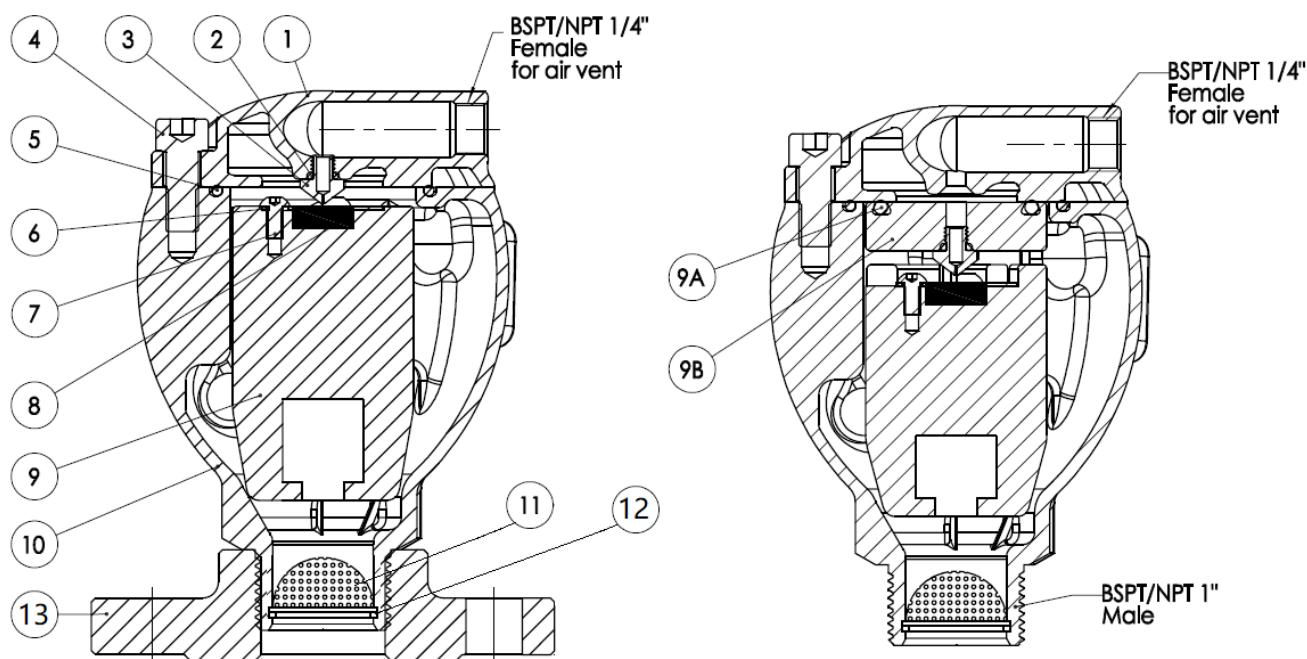
DN mm	DN 20 - DN 25
DN inch	3/4" - 1 "
Temperature	0°C to 70°C
Connection	Male screw
Application	<ul style="list-style-type: none"> - Pipelines: Protection against air accumulation in high points and long horizontal lines. - In proximity to control valves and water meters: Prevention of inaccurate pressure regulation and biased readings due to air existence in these devices.
Flange	Can be screwed into flanges to bear flange connection such as BS EN 1092-2 PN10-16-25-40 and ANSI Class 125-150-250
Design and Test Standard	Designed in compliance with EN-1074/4 and AWWA C-512
Pressure	Minimum 0.2 bar (lower on request) - maximum 40 bar
Option	Customized changes on the flanges and painting on request.

ADVANTAGES

Micro Air Valve 2 functions:

- Aerodynamic air flow path inside, efficient release of air pockets from pressurized pipe lines.
- Stainless steel with fully corrosion resistant parts, maximum PN 40 bar rated, provided with internal ribs for accurate guiding of the float.
- Tangential drainage to ensure fully drain, sideway with female threaded for retrofitting drainage pipeline or check valve.
- Compact, simple and reliable structure: Lower maintenance and increased life span.
- Nozzle can be different port size to fit for demands of different pressure grades.
- Dynamic sealing: Prevents leakage under low pressure conditions (2.9psi; 0.2bar).
- Approved quality control process: Performance and specification tested and measured with specialized test facility.

NOMENCLATURE

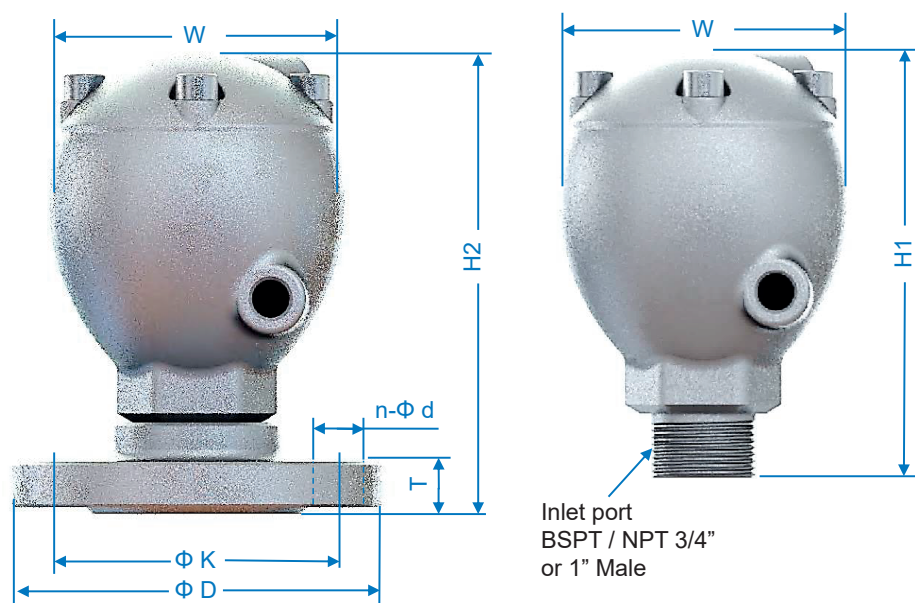


2F1F

3F2F

Designation	Option 1	Option 2	
1.Cap	CF8	CF8M	
2.O-ring	FKM	FKM	
3.Nozzle	SS304	SS316	
4.Bolt	A2	A4	
5.O-ring	FKM	FKM	
6.Plate	SS304	SS316	
7.Stud	A2	A4	
8.Seal	FKM	FKM	
9.Float	PP	PP	
9A.O-ring	FKM	FKM	For 3F2F
9B.Upper float	PP	PP	For 3F2F
10.Body	CF8	CF8M	
11.Filter	SS304	SS316	
12.Circlip	SS304	SS316	
13.Screwed Flange	SS304	SS316	

DIMENSIONS



Weights and Dimensions

Inlet Size	Dimensions (mm)							Weight(kg)
	W	H1	H2	Φ D	Φ K	n-Φ d	T	
Screwed 3/4"	92	132	-	-	-	-	-	1.32
Flanged DN20	92	-	140	105	75	4-Φ14	16	2.28

Inlet Size	Dimensions (mm)							Weight(kg)
	W	H1	H2	Φ D	Φ K	n-Φ d	T	
Screwed 1"	92	134	-	-	-	-	-	1.32
Flanged DN25	92	-	142	115	85	4-Φ14	16	2.52

Orifice Specification

Inlet Size	Automatic Orifice Hole Diameter (mm)			
	145 psi / 10 bar	232 psi / 16 bar	363 psi / 25 bar	580 psi / 40 bar
3/4" / DN20	0.6	0.6	0.4	0.4
1" / DN25	0.6	0.6	0.4	0.4



AIR PERFORMANCE CHART

