



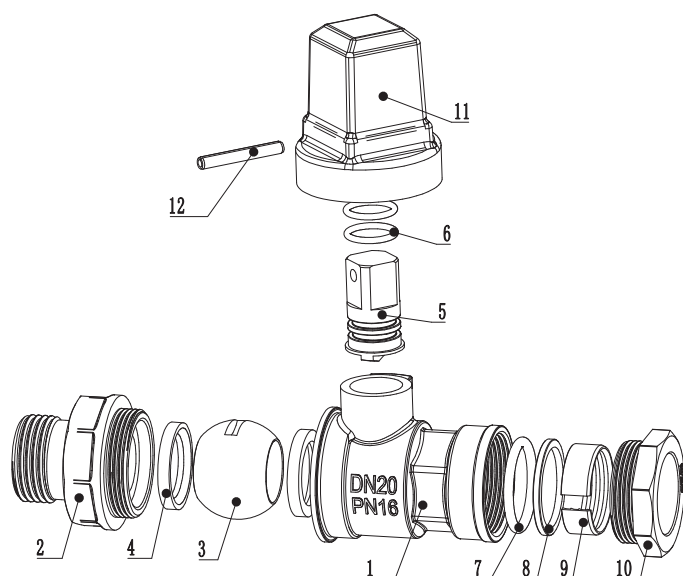
SPECIFICATIONS

DN mm	DN 20 - DN 40
DN inch	3/4" - 1 1/2"
Temperature	0 To 50°C
Type of body	Brass CW617N
Application	Water services, water distribution
Connection	Threaded ISO 7/HDPE
Test	EN 1266-1
Options	Other specifications on request

ADVANTAGES

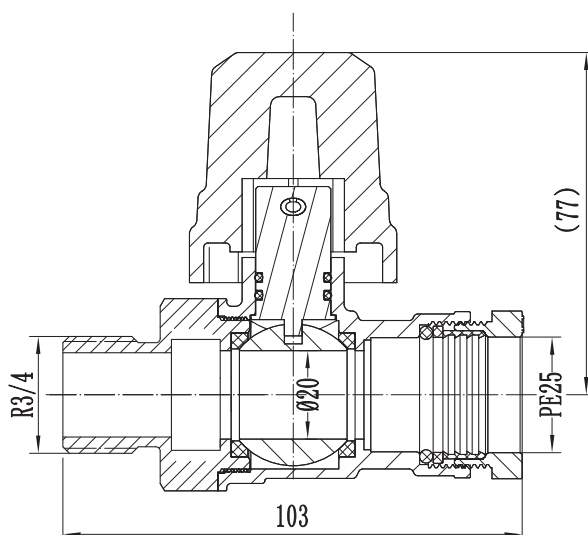
- For paddle clamp.
- Small or big boss.
- Fittings are included.

NOMENCLATURE

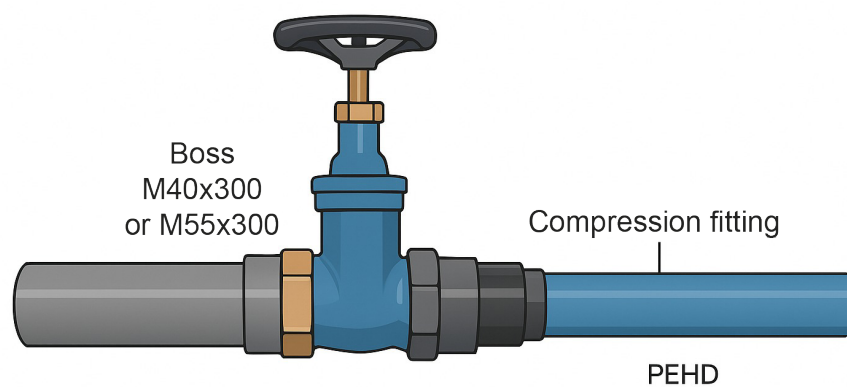


Designation	Materials
1.Body	CW617N
2.Bonnet	CW617N
3.Ball	CW617N
4.Seat	PTFE
5.Stem	CW617N
6.O-ring	NBR
7.O-ring	NBR
8.Washer	CW617N
9.Grip ring	H62
10.PE nut	CW617N
11.Handle	Cast iron
12.Pin	SS

DIMENSIONS



INSTALLATION



Potable water distribution pipe